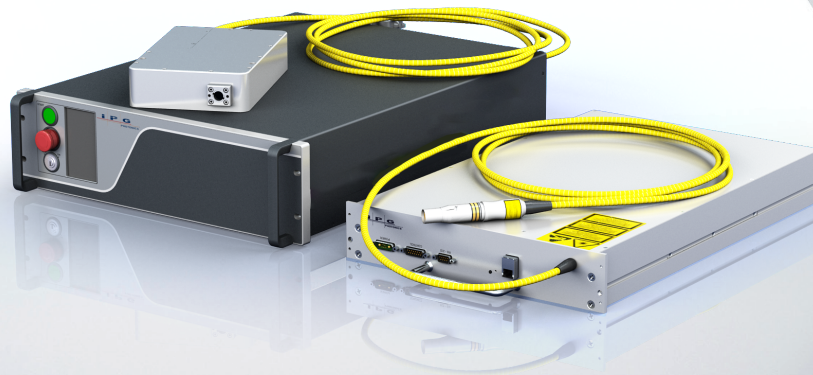


VLM/VLR VISIBLE LASERS

Visible Nanosecond Fiber Lasers

Output Power up to 200 W
Wavelengths from 525 to 635 nm



FEATURES

- ▶ Wavelength Range: 525-635 nm
- ▶ Output Power up to 200 W
- ▶ High Beam Quality
- ▶ Power Stability 1%
- ▶ High Wall-plug Efficiency
- ▶ Compact and Low Cost
- ▶ Industrial Performance
- ▶ SM Free-space or MM Fiber Delivery
- ▶ OEM Modules or End-user Rack Units



APPLICATIONS

- ▶ Laser Light Shows
- ▶ Laser Projectors
- ▶ Medical
- ▶ Scientific

VLM/VLR High Power Series of broadband visible fiber lasers provide up to 200 W average power and flexible choice of operating wavelength in the range of 525 to 635 nm. Designed with IPG highly efficient and reliable fiber laser technologies, this series of lasers features high beam quality with either free-space or fiber beam delivery. The all fiber laser technology directly enables adjusting the average power over the full range while maintaining high beam quality and high power stability. For user convenience, these lasers are packaged as either OEM modules (VLM) or end-user friendly 19" rack mount units (VLR). Due to compact dimensions, industrial grade design and low power consumption, VLM/VLR High Power lasers are ready for integration into customer's systems in the field ranging from laser shows and cinema projectors to medical and scientific applications.

VLM/VLR VISIBLE LASERS

Visible Nanosecond Fiber Lasers

Optical Characteristics

Wavelength*, nm	525 to 635
Bandwidth, nm	up to 10
Mode of Operation	Pulsed
Average Power**, W	up to 200
Pulse Repetition Rate***, MHz	>10
Pulse Duration, ns	4.5
Power Tunability, %	1-100
Power Stability****, %	±0.5
Beam Parameter Product, mm × mrad	<6 (multi-mode option, 100 µm fiber)
Beam Mode Quality, M ²	<1.5 (single-mode option)

*Custom wavelengths in the specified spectral range are available upon request.

**Custom power levels up to 200 W available upon request. The power may be limited by wavelength selection.

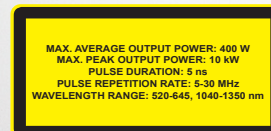
***Optimal repetition rate depends on the wavelength selection.

****Over 8 hours, T= const

General Characteristics	Module	Rack Unit
Laser Dimensions (W × D × H), mm	329 × 529 × 70	448 × 678 × 132
Laser Head Dimensions (W × D × H), mm	130 × 200 × 45 (single-mode option)	
Laser Module or Rack Cooling	Water-cooled	
Laser Head Cooling	Passive Air-cooling (single-mode option)	
Supply Voltage	48 VDC	Single-phase 50/60 Hz, 200-240 VAC



IPGPhotonics.com/contact
www.ipgphotonics.com



Legal notices: All product information is believed to be accurate and is subject to change without notice. Information contained herein shall legally bind IPG only if it is specifically incorporated into the terms and conditions of a sales agreement. Some specific combinations of options may not be available. The user assumes all risks and liability whatsoever in connection with use of a product or its application. IPG, IPG Photonics, The Power to Transform and IPG Photonics' logo are trademarks of IPG Photonics Corporation. © 2025 IPG Photonics Corporation. All rights reserved.