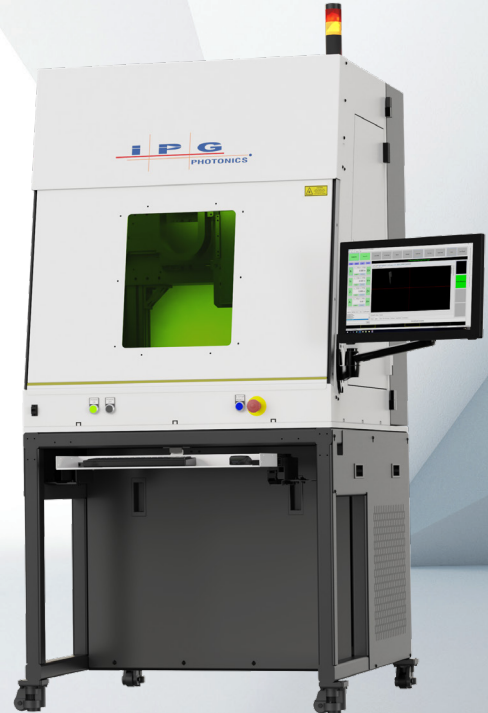


2500

Precision Laser Workstation



FEATURES

- ▶ Configurations for Welding, Cutting, Cleaning, and Marking
- ▶ Designed for use with Continuous Wave, Quasi-Continuous Wave, and Pulsed Lasers
- ▶ Compact design with a small footprint
- ▶ Fine control of laser parameters and high-precision motion platform
- ▶ CDRH Class 1 Laser Safe
- ▶ Ability to add multiple rotary axis to support head and part rotation



BENEFITS

- ▶ High productivity and part yield maximizes production output
- ▶ Highly configurable and optimized to application requirements
- ▶ Process development accelerates time to first part
- ▶ IPG Core Software removes barriers to regulatory compliance

The **2500** is a turnkey system configured for fast laser processing deployment for medical device and aerospace industry manufacturers. Designed for use with a variety of rack-mounted IPG laser sources and process heads, the 2500 offers high productivity for cutting, welding, cleaning, and marking applications. The 2500 is equipped with high-accuracy stages for precision applications. With a compact design and flexible configuration options, the system is easily integrated onto the manufacturing floor for prototyping as well as full-scale production.

Easy-to-use software further accelerates time to production with robust, proven, and validated libraries of preloaded program routines. Operators use IPG Core Software which fully integrates control of motion axes, vision systems, laser parameters, process head programming, and auxiliary equipment in an intuitive user interface. IPG software includes access to all sub-system status information, account validation and password control, process control, self-check functions, and time-stamped records to meet regulatory compliance requirements.

2500

Precision Laser Workstation

System Specifications

Laser Sources, W	Most IPG Laser sources supported
Beam Delivery	IPG Wobble Head, IPG Welding Head, IPG Scanning Head
Part Loading	Manual loading with automatic door
Motion Control	Up to four axes coordinate motion, five axes total
Process Gas	Single programmable gas standard, multiple gasses optional

Motion Stages

Travel (X x Y x Z) mm	300 x 200 x 200
Max Speed (mm/sec)	300
Stage Type	Precision Machined Ballscrew Stage
Tooling	Threaded Aluminum Base Plate

General Characteristics

Dimensions, W x D x H, mm	970 x 1110 x 2150
Weight, kg.	900
Process Gas	Programmable Gas Flow Control
Illumination & Camera	Programmable Lighting Controller with coaxial camera
Controls/ Interface	IPG Core or HMI-2200 User Interface Industrial PC /Windows 10 Operating System 22" LCD Touchscreen, Industrial UPS
Safety	CDRH Class I Laser System (Complies with 21 CFR Chapter 1, Subchapter J)

System Options

Process Monitoring	LDD Real Time Direct Weld Measurement
Motion Axes	A-Axis, B-Axis (up to five axes total)
Vision	Camera Vision System for automatic alignment and calibrations
Illumination	Computer Controlled Illumination
Power Measurements	On-Target Power Meter Pulse Energy Detector
Gas Handling	Programmable Gas Control
Data Input	Remote Jog Box Barcode Scanner RFID Reader
Beam Delivery Options	Automated Dual Collimator, Multiple Lens configuration
Remote I/O	Remote I/O
21CFR Part 11 Software	21CFR Part 11 Software
Factory Integration	Factory MES Software
Custom Automation	Custom Automation Available

www.ipgphotonics.com

Legal notices: All product information is believed to be accurate and is subject to change without notice. Information contained herein shall legally bind IPG only if it is specifically incorporated into the terms and conditions of a sales agreement. Some specific combinations of options may not be available. The user assumes all risks and liability whatsoever in connection with use of a product or its application. IPG, IPG Photonics, The Power to Transform and IPG Photonics' logo are trademarks of IPG Photonics Corporation. © 2025 IPG Photonics Corporation. All rights reserved.