

Peripheral Equipment Jig Positioner

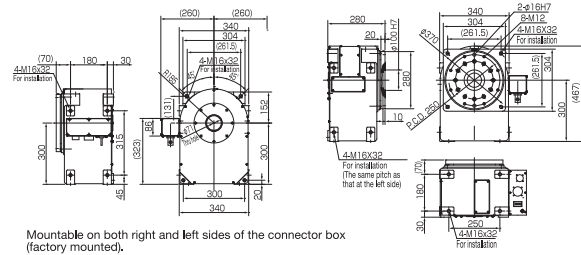
- 8 models of positioners available from 250 kg to 1,000 kg payload capacity.
- Operation of the positioner is totally controlled by the robot teaching pendant.
- Positioners can be operated independently or synchronized with the robot.
- High accuracy operation is made possible by the same AC servo motor and non-backlash reduction gear that is used for the robot.
- Synchronized motion when using with the OTC robot.

Positioner

Positioner Headstock 1PB Series

- Can be used to build varied jig systems with a large degree of positioning flexibility.
- A hole through the center of the rotary table, enabling cables and hoses to be routed through easily.

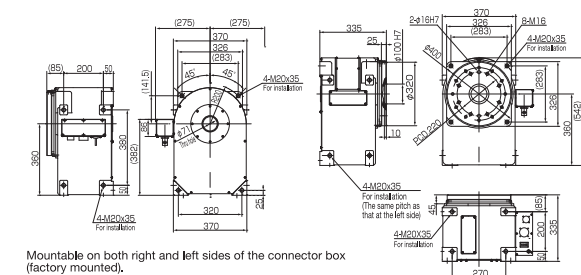
1PB250



Mountable on both right and left sides of the connector box (factory mounted).

Model Name	A2PB252-E
Max. Payload Capacity	250 kg
Rotating Speed	2.6 rad/s [150°/s]
Allowable Rotating Torque	206 N·m
Position Repeatability	±0.1 mm (Position at R300 mm)
Stop Position	Random
Mass (Weight)	110 kg

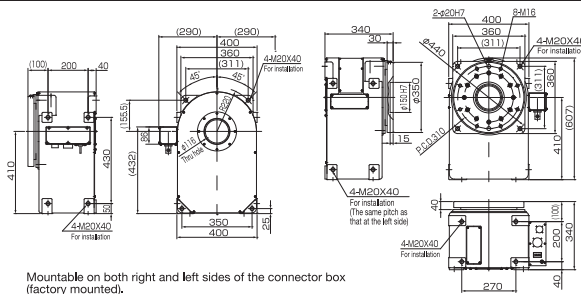
1PB500



Mountable on both right and left sides of the connector box (factory mounted).

Model Name	A2PB502-E
Max. Payload Capacity	500 kg
Rotating Speed	2.1 rad/s [120°/s]
Allowable Rotating Torque	490 N·m
Position Repeatability	±0.1 mm (Position at R300 mm)
Stop Position	Random
Mass (Weight)	170 kg

1PB1000



Mountable on both right and left sides of the connector box (factory mounted).

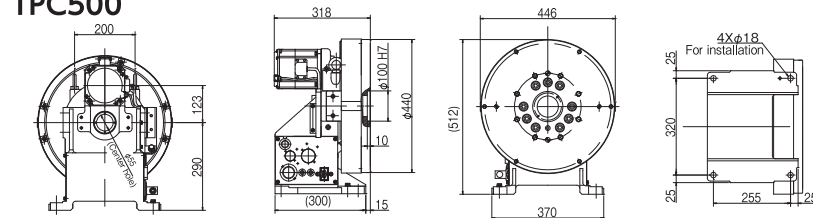
Model Name	A2PB1002-E
Max. Payload Capacity	1000 kg
Rotating Speed	1.3 rad/s [72°/s]
Allowable Rotating Torque	1078 N·m
Position Repeatability	±0.1 mm (Position at R300 mm)
Stop Position	Random
Mass (Weight)	220 kg

Positioner

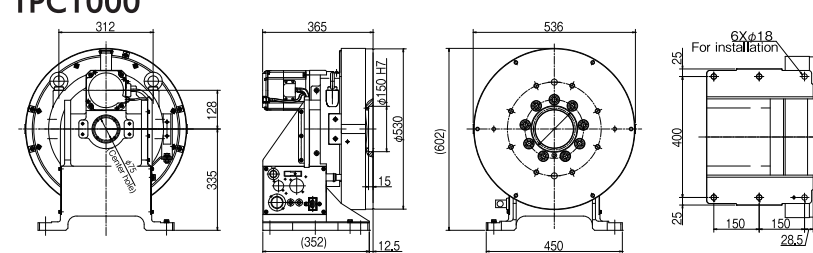
Positioner Headstock 1PC Series

- Designed for Compact, lightweight and easy installation.
- A hole through the center of the rotary table, enabling cables and hoses to be routed through easily.

1PC500



1PC1000



Model Name	PC501	PC1001
Max. Payload Capacity	500kg	1000kg
Rotating Speed	2.1 rad/s [120°/s]	1.3 rad/s [72°/s]
Allowable Rotating Torque	490N·m	1078N·m
Position Repeatability	±0.1 mm (Position at R300 mm)	±0.1 mm (Position at R300 mm)
Stop Position	Random	Random
Mass (Weight)	110kg	193kg



1PC500

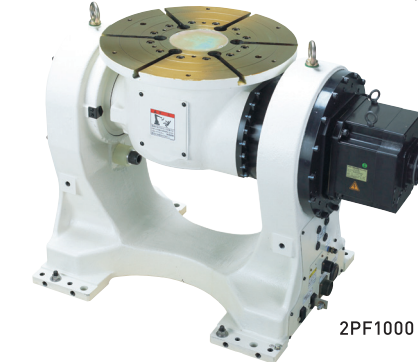
Peripheral Equipment Jig Positioner,Slider

Positioner

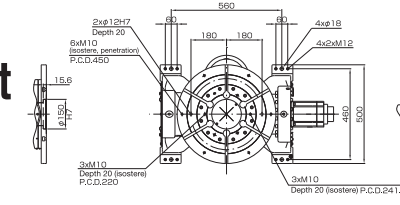
2-Axes Double Support Positioner 2PF Series

- High-speed motion increases production efficiency. An increase in the maximum rotation speed of the tilting axis by 2.5 times and in rotation axis by two times was achieved in comparison with the conventional machine 300 kg payload type.

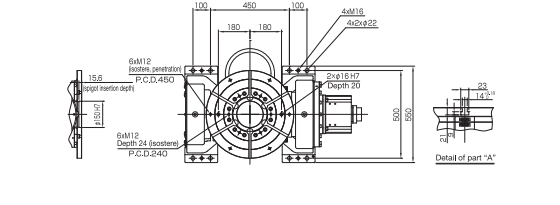
2PF300·500·1000



2PF300·500



2PF1000



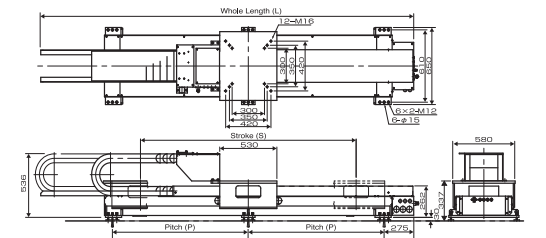
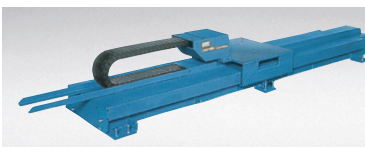
Model Name	A2PF301-ENN	A2PF501-ENN	A2PF1001-ENN
Max. Payload Capacity	300 kg	500 kg	1000 kg
Rotating Speed	3.1 rad/s [180°/s]	2.8 rad/s [162°/s]	2.9 rad/s [166°/s]
Tilting Speed	2.2 rad/s [125°/s]	1.5 rad/s [84°/s]	1.4 rad/s [82°/s]
Rotating Torque	294 N·m	392 N·m	882 N·m
Tilting Torque	882 N·m	1347 N·m	3704 N·m
Position Repeatability	±0.08 mm (Position at R250 mm)	±0.08 mm (Position at R250 mm)	±0.08 mm (Position at R250 mm)
Stop Position	Random	Random	Random
Mass (Weight)	260 kg	260 kg	470 kg

- Sliders are available in 12 models with strokes between 1 m and 6.9 m.
- Employment of an AC servo motor and non-backlash reduction gear provides the same high accuracy operation as that of robots.
- Combination with the OTC robot allows synchronized operation.
- The cable bearer is provided in the center of the slider, which allows space-saving installation.

Slider

Linear Sliders (Light Duty) Model 1SB

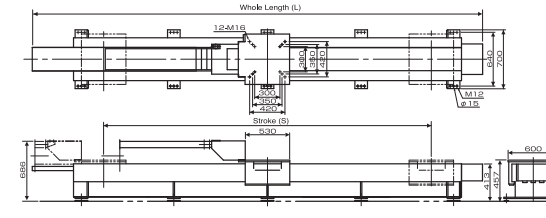
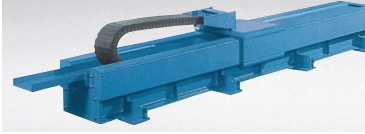
- A maximum of 330 kg can be loaded.
- Dust-proof structure prevents spatter, oil and dust from entering.



Slider

Linear Sliders (Standard Duty) Model 1SR

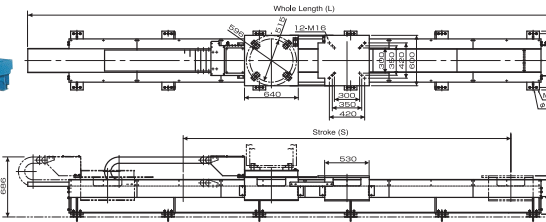
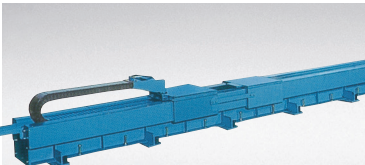
- Standard Duty with a maximum loading weight of 330 kg
- Dust-proof structure prevents spatter, oil and dust from entering.



Slider

Linear Sliders (with Carriage Duty) Model 1SR-P

- The wire pack can be mounted on the truck connected to the robot-mounting part.
- Dust-proof structure prevents spatter, oil and dust from entering.



	Model 1SB	Model 1SR	Model 1SR-P
Model Name	A2SB102-E, A2SB202-E	A2SR292-E, A2SR392-E, A2SR492-E, A2SR592-E, A2SR692-E	A2SR19P2-E, A2SR29P2-E, A2SR39P2-E, A2SR49P2-E, A2SR59P2-E
Stroke Length	1 m, 2 m	2.9 m, 3.9 m, 4.9 m, 5.9 m, 6.9 m	1.9 m, 2.9 m, 3.9 m, 4.9 m, 5.9 m
Max. Moving Speed	0.3 m/s	0.295 m/s	0.295 m/s
Max. Moving Capacity	330 kg	330 kg	660 kg (330 kg for each table)
Position Repeatability	±0.1 mm	±0.1 mm	±0.1 mm
Stroke S (mm)	A2SB102-J 1000, A2SB202-J 2000	A2SR292-J 2900, A2SR392-J 3900, A2SR492-J 4900, A2SR592-J 5900, A2SR692-J 6900	A2SR19P2-J 1900, A2SR29P2-J 2900, A2SR39P2-J 3900, A2SR49P2-J 4900, A2SR59P2-J 5900
Whole Length L (mm)	2510, 3510	4500, 5500, 6500, 7500, 8500	4500, 5500, 6500, 7500, 8500
Mass (kg)	450, 550	650, 750, 850, 950, 1050	800, 900, 1000, 1100, 1200

* Ensure that the total mass of the manipulator and other peripherals does not exceed the payload capacity.